

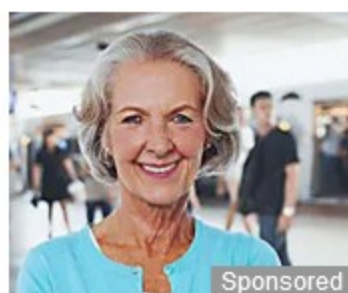


Advertorial

TikTok mum says fitness app is 'game changer' as she shares postpartum



Angela Rayner squirms as Kay Burley grills her over resurfaced winter fuel tweet



Sponsored

People Born 1939-1974 With No Life Insurance Could Be Eligible For Reassured News



BBC calls detail abse

Rachel Reeves blasted over 'failure to assess risks' of disastrous winter fuel payment cut

The Chancellor has been heavily criticised for slashing the winter fuel payment for elderly Britons.

By **MAX PARRY**, News Reporter

19:32, Sat, Aug 24, 2024 | UPDATED: 19:35, Sat, Aug 24, 2024



BOOKMARK 

259



Listen to this article



Rachel Reeves is grilled in New York (Image: Getty)



Rachel Reeves has been attacked following the decision to cut winter fuel payments, with experts arguing she carried out "no impact assessment" before making the decision.

Sponsored Link by Taboola



Gamers in Barnet Discover Hero Wars [Play Now]

Hero Wars

Play Now

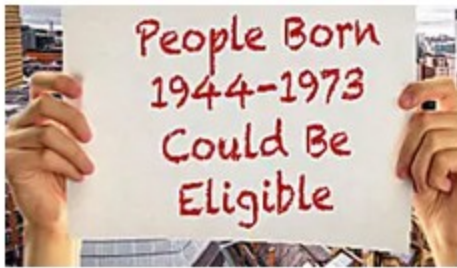
According to the Telegraph, a Department of Work and Pensions legal note accompanying upcoming changes read: "A full impact assessment has not been produced for this instrument as no, or no significant, impact on the private, public or voluntary sectors is foreseen."

Despite the admission, the statement was published before Parliament on Thursday, and was signed by the Labour pensions minister Emma Reynolds.





In July the Chancellor announced that pensioners who don't get pension credit or similar means-tested benefits will no longer be able to claim annual winter fuel payments of between £100 and £300. Around 10 million Brits will be affected.



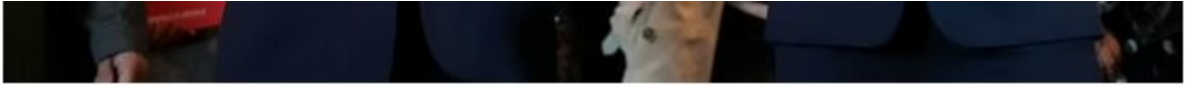
British Seniors

Born Between 1944-1973? You Could Be Eligible For This

by Taboola

READ MORE **Yvette Cooper explains plan to end immigration and asylum 'chaos'**





The PM and Chancellor have been blasted by pensioners and experts over the cut (Image: Getty)



Experts have warned that the move will see pensioners suffer a brutally sharp uptick in energy prices this winter.

According to The Telegraph, Baroness Ros Altmann, a Tory peer and pensions expert, said: "Not only would something like this normally need a full impact assessment, it should go to the Social Security Advisory Committee, and they've completely bypassed that too.

"There was no warning for this – it wasn't in their manifesto."